



Exclusive Products for Jimmy Nomad
(2025.4 ~ JC74W)

Door Handle Protector Installation Instructions

Item No : **EXJ-06 / EXJ-07**

Thank you very much for purchasing an IPF product.
Please read the instructions in this manual carefully and use the product correctly.
After reading, please keep this manual in a safe place and take care not to lose it.

Cautions for Installation

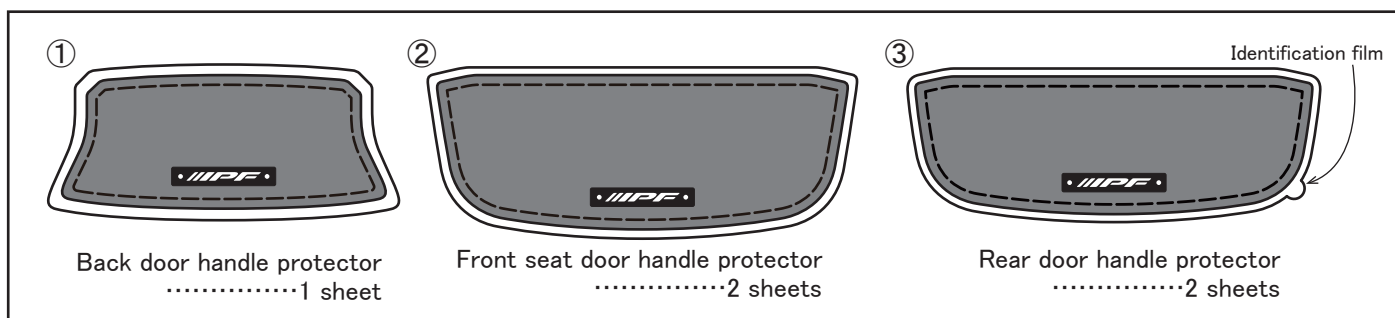
⚠ Warning

- Not responsible for any malfunctions or accidents caused by processing, faulty installation or misuse of this product.
- If the product is damaged or deformed by accident or contact, it is dangerous and must be removed.

⚠ Attention

- Remove dirt and degrease the attachment area before the installation work.
- Since adhesive strength decreases when the environmental temperature or the temperature of the attachment surface is below 20° C, warm the adhesive surface and the attachment surface of the product with a hairdryer or similar before attachment.
- Note that if a coating or similar is applied to the attachment surface, it may peel off during degreasing and cleaning.
- After installation, be careful not to wash the car or otherwise expose it to water within 24 hours. It may cause floating or peeling.
- If chemical products such as waxes and coatings or solvents such as petrol adhere to the product, wipe it off immediately. This may cause stains, deformation, etc.

Components

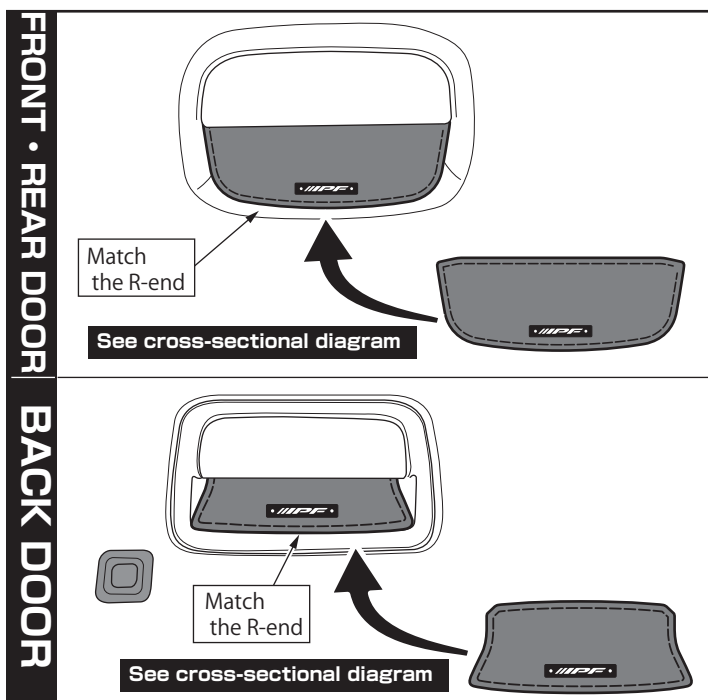
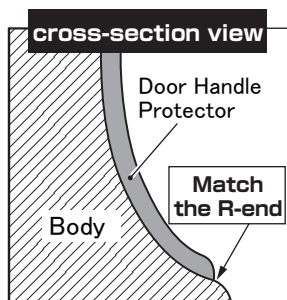


Installation Method

1. Degrease and clean the attachment surfaces.
2. Peel off the underside of the release film on the back of the product, balance the door handle shape with the top, bottom, left and right, and position it.
3. Crimp the product from the centre outwards so that it blends in with the concave shape of the door handle.
4. Peel off the upper side of the release film and crimp it in the same way as the lower side.

⚠ Caution

Take care not to touch the adhesive surface.
Make sure there is no air biting.
This may cause peeling or floating.



About the after-sales service

If you have any questions about the product, please contact your dealer or us.

Contact details.: **IPF**

2656 KURAGANO-MACHI, TAKASAKI-CITY, GUNMA, JAPAN 370-1201
TEL. +81-27-346-3316 FAX. +81-27-347-1594
Reception hours.: AM9:00~PM12:00 PM1:00~PM5:00